

NAVIGATOR Evo



System for root canal treatment



Navigator EVO is the successor to the WIZARD Navigator, the previous successful system. It is enhanced by the new findings of our development team. The most noticeable change is material – thermal treated NiTi, which provides greater flexibility and durability.

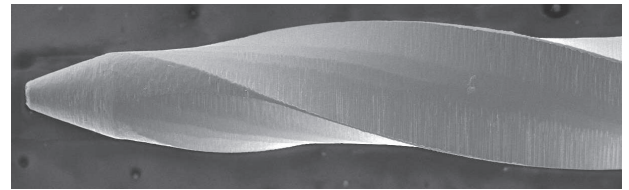
It is a sophisticated system using continuous clockwise motion with torque control. Navigator EVO can be reused and resterilised.

"We improve the quality of life."

NAVIGATOR *EVO*

- > Greater flexibility
- > Longer lifetime
- > Efficient dentin removal
- > Sterilisable
- > Reusable

High level of a technological processing of the instruments



An electron microscope image captures profile of the instrument.

Safe inactive tip



The inactive tip makes it easy to guide the instrument in the root canal and guarantees safety. In case of overloading during the root canal preparation, the inactive tip prevents instrument fracture and allows only its twist.

Division of the instruments according to the type of use

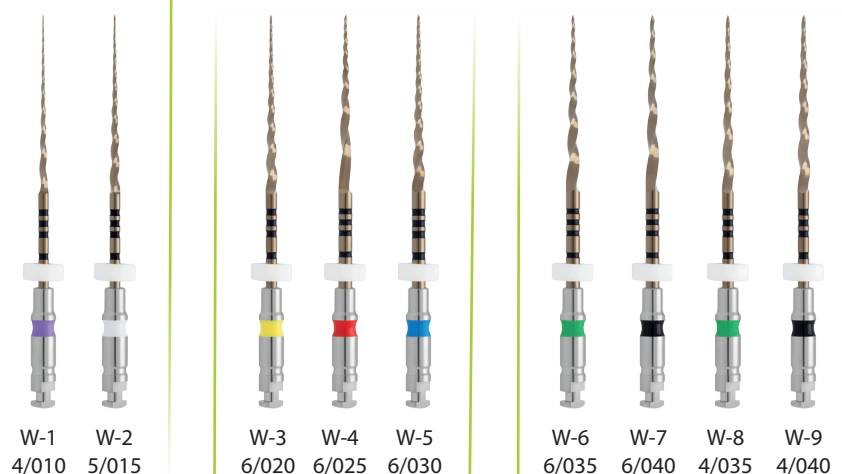
SCOUTING

Hand instruments made of the high quality stainless steel ideally designed for their role of primary scouting the root canal.



GLIDE PATH

These two instruments are designed for the easiest and safest passage of the root canal by machine-assisted processing. These are the smallest and most effective instruments with the heat treatment of the material.



CORONAL FLARING

A conventional instrument for loosening the overhang and creating a clear access to the root canal in the coronal part of the cavity.

SHAPING

These three major shaping instruments W-3, W-4 and W-5 achieve great results in detritus preparation thanks to their three-bladed profile and heat treatment. Their design ensures high flexibility and long lifetime of these instruments.

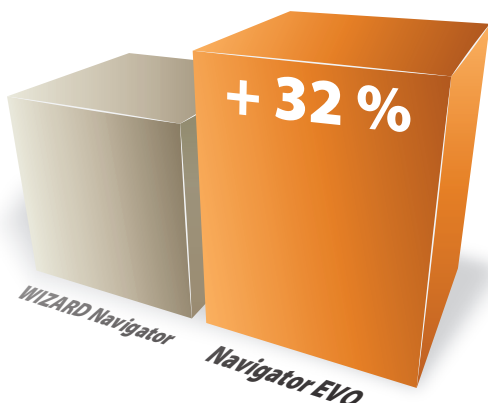
FINISHING

The final instruments are Navigator EVO W-6 to W-9, which ensure widening and preparation of the root canals to the final size needed for subsequent filling. The options are instruments with the 4% and 6% conicity.

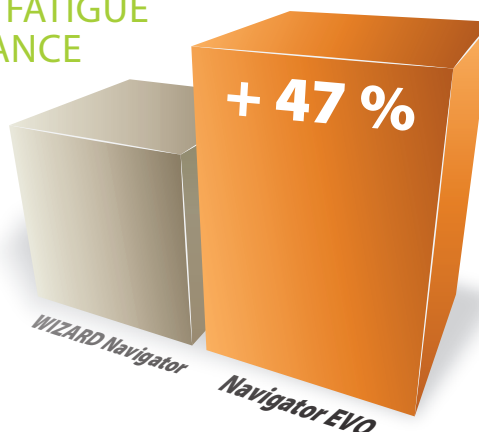
Heat treatment of the MEDIN NiTi material

MEDIN company developed a special technology of the controlled heat treatment processing, which provides enhanced resistance to the cyclic fatigue. The whole process of the heat affecting of the NiTi material provides increased flexibility and improved surface finishing of the instrument.

FLEXIBILITY



CYCLIC FATIGUE RESISTANCE

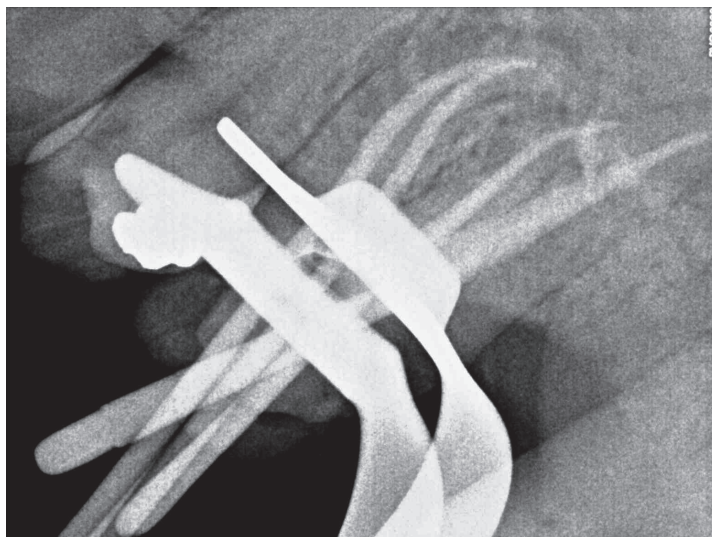


Recommendation



Dr. Panagiotis Moisiadis (Athens, Greece)

Second upper premolar showing symptoms of an acute apical periodontitis. The buccal root canal was shaped by Navigator EVO W-8; 4/035. The palatal canal was also shaped by Navigator EVO W-8; 4/035.



MUDr. Jan Prouza (Dvůr Králové nad Labem, Czech Republic)

Tooth number 26 – first left upper molar, acute pulpitis, endodontic treatment – MB1, MB2 and DB canals are shaped by Navigator EVO W-8; 4/035 and P canal by Navigator EVO W-7; 6/040.

Instructional video Navigator EVO – Step by Step

> www.medin.cz/navigator-evo-en



NiTi system for root canal preparation

Scouting				Coronal flaring		Glide path		Shaping			Finishing		
packing 6 pcs				W-XN		W-1		W-2			W-3		
W-File				L (mm)		taper ratio		W-4			W-5		
W-File				ISO		ISO		W-6			W-7		
W-File								W-8			W-9		
144 51				144 50 1135		L = 21		1605			1625		
9372						L = 25		1615			1635		
9382						L = 31		1625			1645		
9392								1635			1665		
								1645			1675		
								1655			1685		
								1665			1745		
								1675			1755		
								1685			1765		
								1745			1775		
								1755			1805		
								1765			1815		
								1775			1825		
								1805			1835		
								1815			1845		
								1825			1855		
								1835			1865		
								1845					
								1855					
								1865					

Recommended setting for endomotor: revolution 140–250 min⁻¹ (R.P.M.), torsion 1.0–2.5 N.cm

W-File probing set

L = 25 144 55 1122

Set contains 6 instruments

	144 51 9372	W-File; 006 L25	2x
	144 51 9382	W-File; 008 L25	2x
	144 51 9392	W-File; 010 L25	2x

Navigator EVO set I basic set

L = 21	144 45 1185
L = 25	144 45 1215
L = 31	144 45 1245

Sets contain 6 instruments

	Navigator EVO W-1; 4/010	1x
	Navigator EVO W-2; 5/015	1x
	Navigator EVO W-3; 6/020	1x
	Navigator EVO W-4; 6/025	1x
	Navigator EVO W-5; 6/030	1x
	Navigator EVO W-XN; 7/025	1x

Navigator EVO set II complementary set

L = 21	144 45 1195
L = 25	144 45 1225
L = 31	144 45 1255

Sets contain 6 instruments

	Navigator EVO W-6; 6/035	2x
	Navigator EVO W-7; 6/040	2x
	Navigator EVO W-8; 4/035	1x
	Navigator EVO W-9; 4/040	1x

Navigator EVO set III economy set

L = 21	144 45 1205
L = 25	144 45 1235
L = 31	144 45 1265

Sets contain 6 instruments

	Navigator EVO W-1; 4/010	2x
	Navigator EVO W-2; 5/015	2x
	Navigator EVO W-3; 6/020	2x



Navigator EVO start kit
basic set L25 + brochure + instruction
144 45 1305



Cassette and stand
65x52x52 mm, without instruments
139 50 0880

Your distributor: