

SURGICAL PROCEDURE
PERIPROSTHETIC FEMORAL FRACTURES



Periprosthetic femoral fractures

Indications

- for periprosthetic femoral fractures
 - for periprosthetic diaphyseal femur fractures
 - for fractures at intramedullary implants
- Vancouver B
Vancouver C

Implant:

The implants for periprosthetic femoral damage are made of implant steel (according to ISO 5832-1).

Implant system consists of:



Straight plate angularly stable



Femoral proximal plate



Distal femoral plate



Locking bone screw 5/3,5

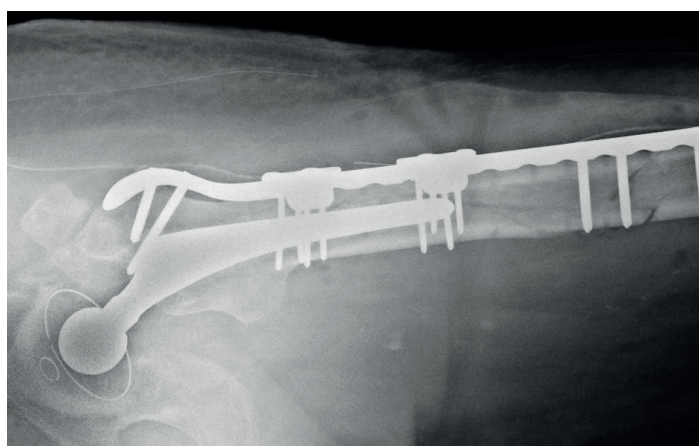
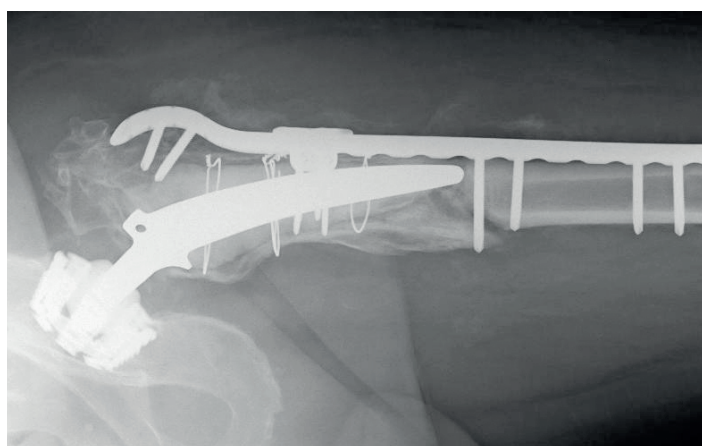
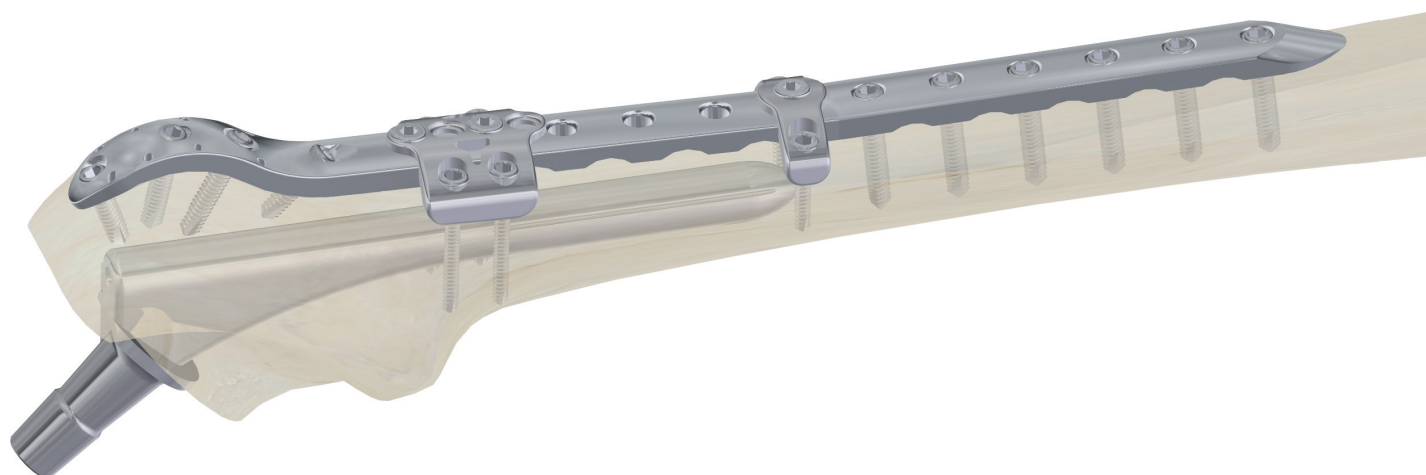
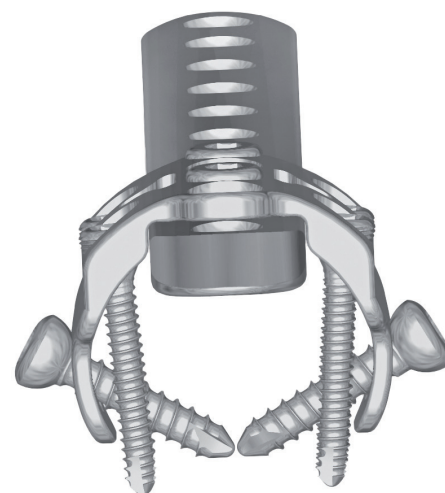
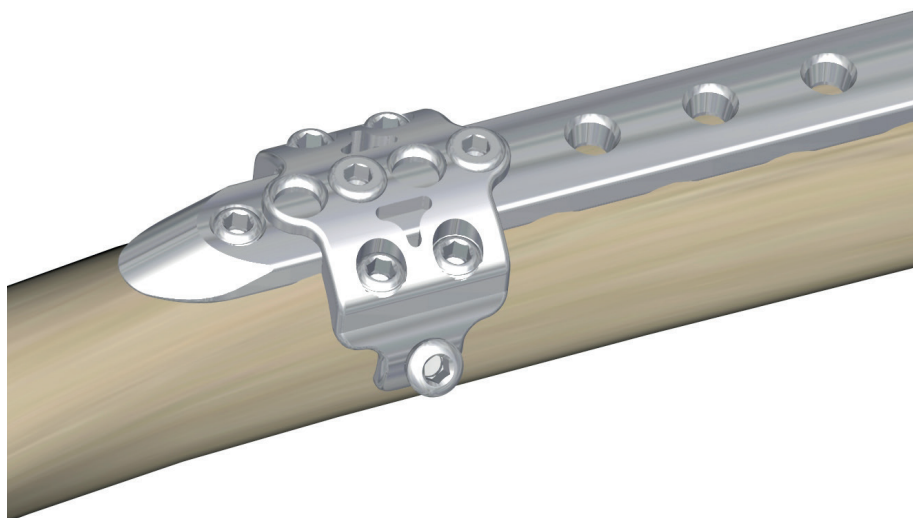


Locking bone screw 5



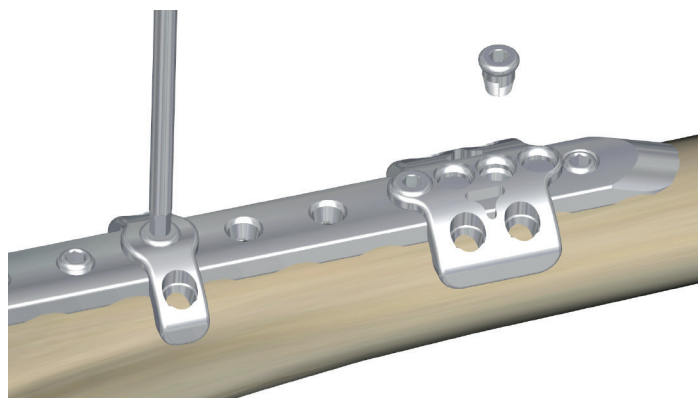
Self-tapping cortical bone screw HA 4.5

Surgical procedure



1. Clamp placement

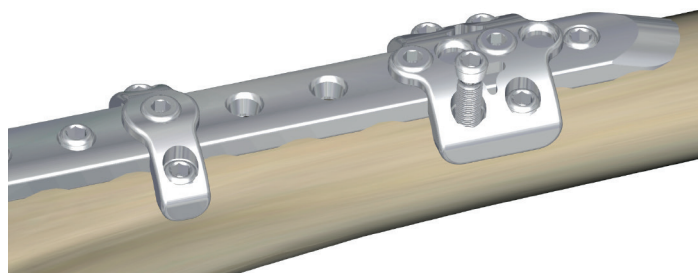
Fix the clamp on a the plate in its proximal part. It's possible to move the clamp in range of 8.5 mm. We connect the clamp firmly to the plate with a screw.



2. Insetion of the screws in the clamps

Locking screws of \varnothing 5/3.5 mm are inserted into the holes in Clamp 1 and 2.

Screws of \varnothing 5/3.5 mm are inserted in Clamp 3 and cortical screws HA 4.5 mm are placed in holes without threads.



3. Check of the insertion

Check tightening of the screws in both the plates and clamp. Remove potential instruments for temporary plate fixation.

4. Recommended procedure of implant removal

Procedure for removing of the plate is the same as with standard plates. At damage of hexagon in the screw head or at other problems with removing of the screws, it is possible to use MEDIN set for screws extraction.

5. Final notes

The MEDIN company requires to use their own implants only to guarantee safe use of the implant. Implants from different companies must never be combined.

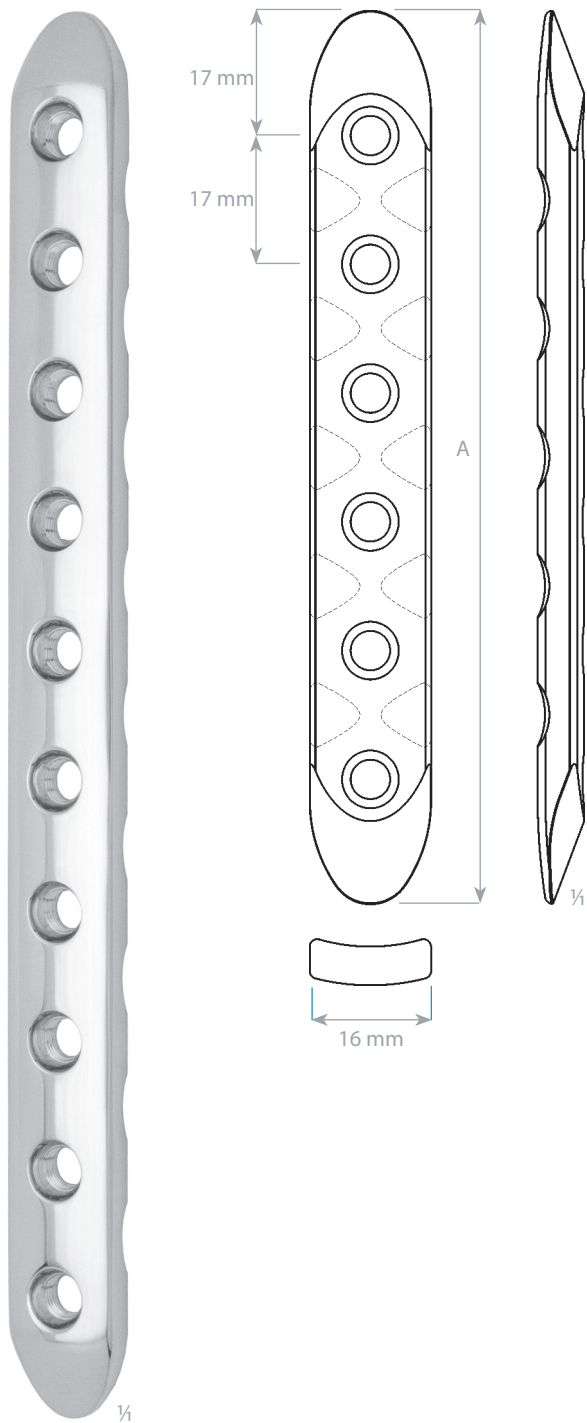
Colour-coding of products

Drill with case for pre-drilling of hole for cortical screws HA4.5 mm



Drill with case for pre-drilling of hole for locking screws of \varnothing 5/3.5 mm





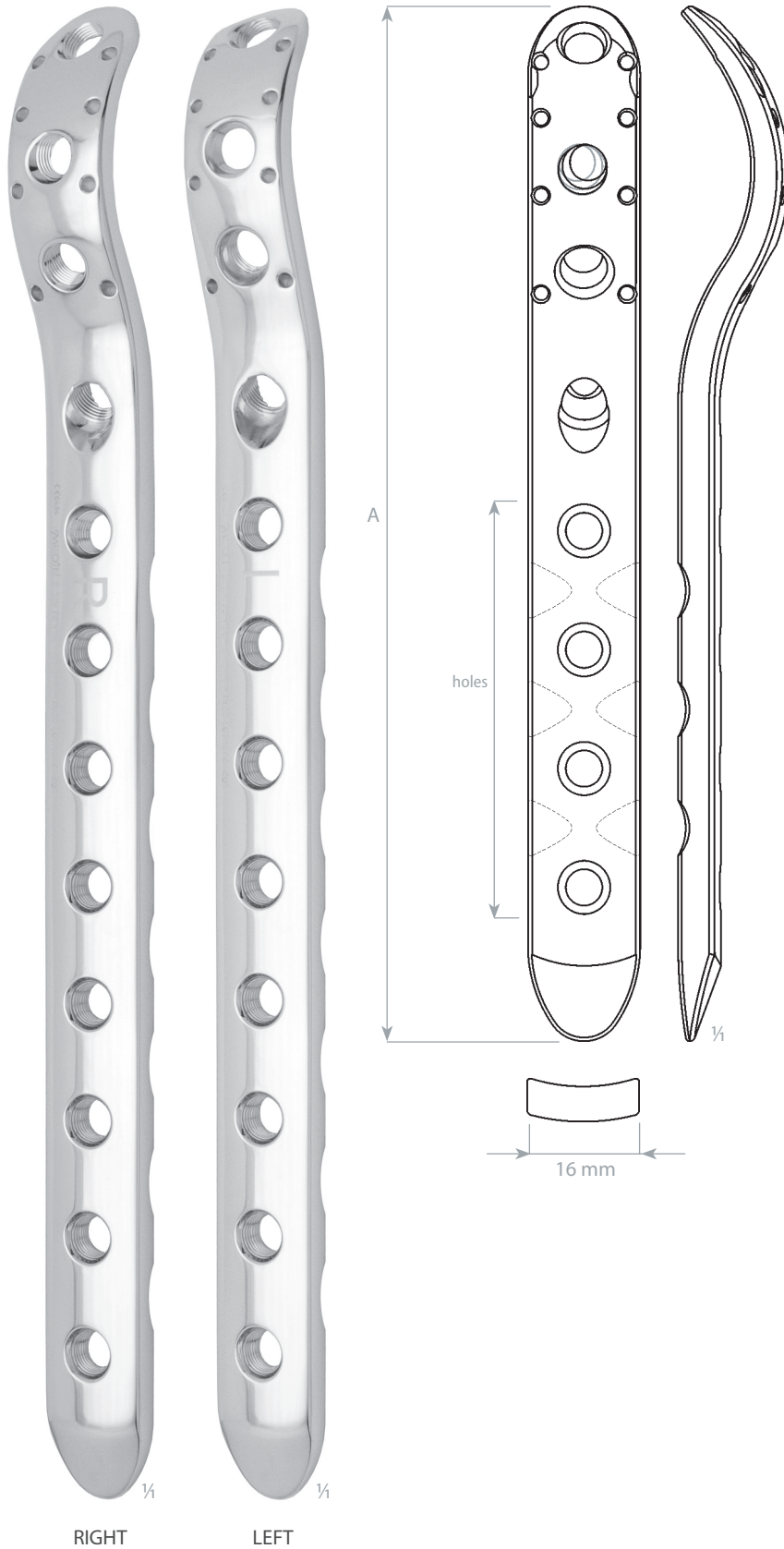
Straight plate angularly stable

	A	holes
397 129 78 5020	169 mm	9
397 129 78 5025	186 mm	10
397 129 78 5030	203 mm	11
397 129 78 5035	220 mm	12
397 129 78 5040	237 mm	13
397 129 78 5045	254 mm	14
397 129 78 5050	271 mm	15
397 129 78 5055	288 mm	16
397 129 78 5060	305 mm	17
397 129 78 5355	322 mm	18
397 129 78 5360	339 mm	19
397 129 78 5365	356 mm	20

plate thickness	5.0 mm
distance of holes	17 mm

SCREWS:
 locking bone screws 5 and 5/3.5 mm
 cortical screws HA 4.5
 cortical screws HA 5

Compatible with periprosthetic clamps.



Proximal femoral plate angularly stable, right

SSt	A	holes
397 129 78 5065	114 mm	2
397 129 78 5070	148 mm	4
397 129 78 5075	182 mm	6
397 129 78 5080	216 mm	8
397 129 78 5085	250 mm	10
397 129 78 5090	284 mm	12
397 129 78 5095	318 mm	14
397 129 78 5100	352 mm	16
397 129 78 5105	386 mm	18
397 129 78 5110	420 mm	20

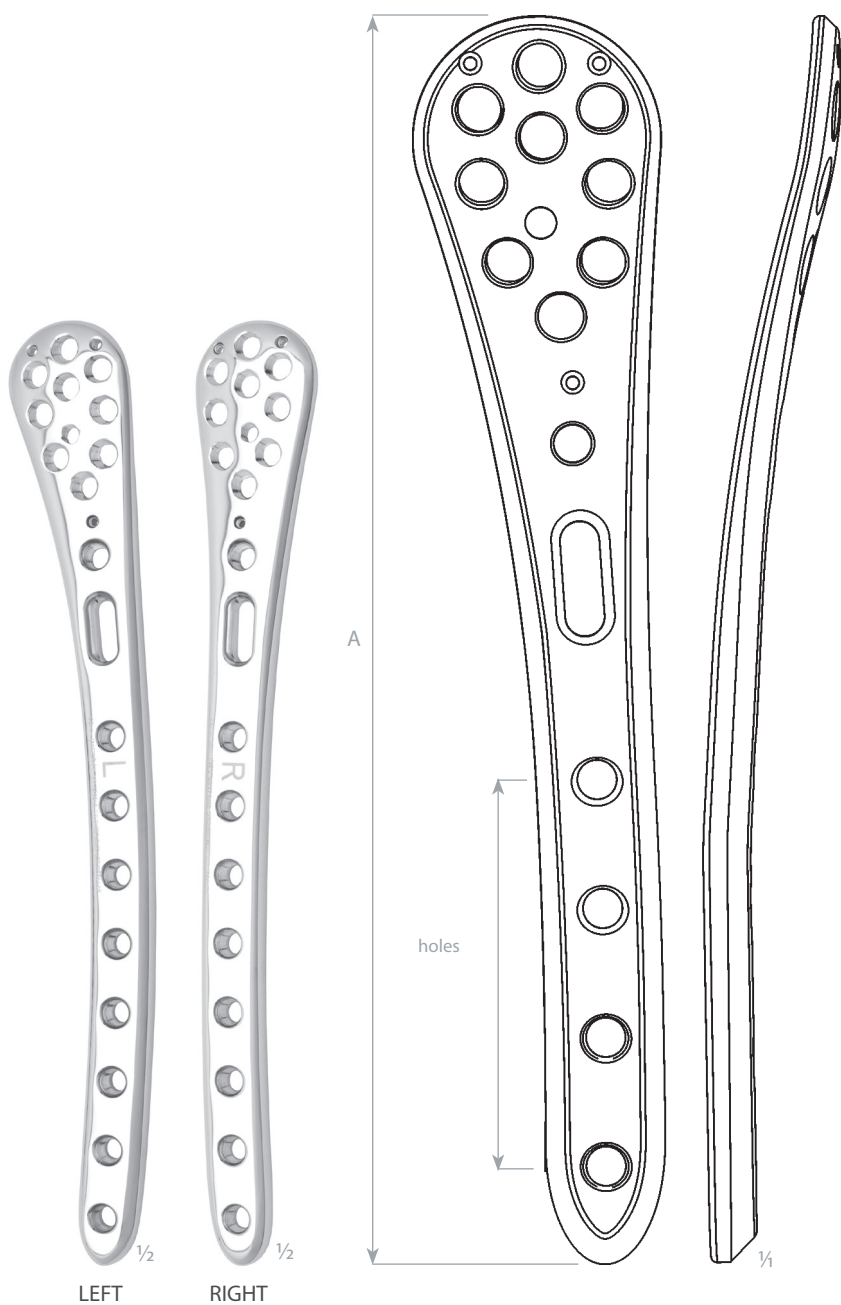
Proximal femoral plate angularly stable, left

SSt	A	holes
397 129 78 5115	114 mm	2
397 129 78 5120	148 mm	4
397 129 78 5125	182 mm	6
397 129 78 5130	216 mm	8
397 129 78 5135	250 mm	10
397 129 78 5140	284 mm	12
397 129 78 5145	318 mm	14
397 129 78 5150	352 mm	16
397 129 78 5155	386 mm	18
397 129 78 5160	420 mm	20

plate thickness	5.0 mm
distance of holes	17 mm

SCREWS:
locking bone screws 5 and 5/3.5 mm
cortical screws HA 4.5
cortical screws HA 5

Compatible with periprosthetic clamps.



Distal femoral plate angularly stable, left

SSt	A	holes
397 129 77 9520	165 mm	4
397 129 77 9530	202 mm	6
397 129 77 9540	232 mm	8
397 129 77 9550	266 mm	10
397 129 77 9560	299 mm	12
397 129 78 6890	336 mm	14

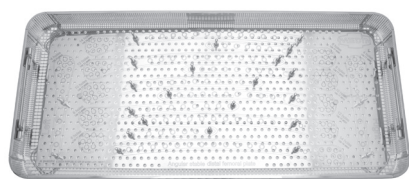
Distal femoral plate angularly stable, right

SSt	A	holes
397 129 77 9580	165 mm	4
397 129 77 9590	202 mm	6
397 129 77 9600	232 mm	8
397 129 77 9610	266 mm	10
397 129 77 9620	299 mm	12
397 129 78 6900	336 mm	14

plate thickness	6.0 mm
distance of holes	17 mm

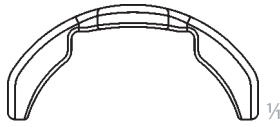
SCREWS:
locking bone screws 5 and 5/3.5 mm
cortical screws HA 4.5
cortical screws HA 5

Compatible with periprosthetic clamps.



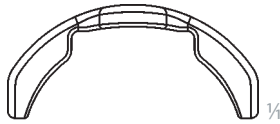
397 129 69 6230 Sieve for distal femoral plates
540 × 240 × 50 mm
excluding implants

Sieve is for keeping of: right femoral distal plates 4; 6; 8; 10; 12; 14 holes (6×1 piece) and left femoral distal plates 4; 6; 8; 10; 12; 14 holes (6×1 piece).



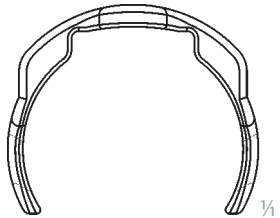
Clamp 1

397 129 78 3700



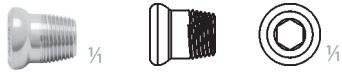
Clamp 2

397 129 78 3710



Clamp 3

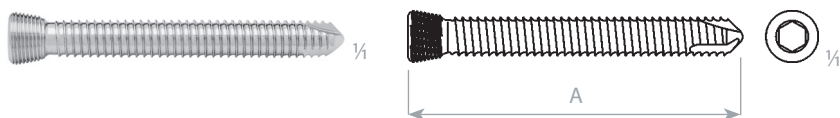
397 129 78 3720



Locking screw for clamp

397 129 78 5000

screwdriver	Ø 3.5 mm
head diameter	8 mm



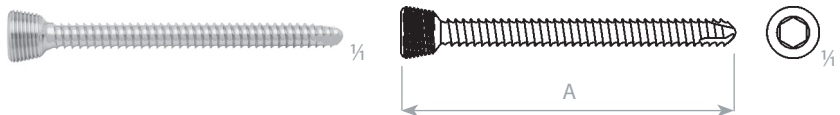
thread diameter	5.0 mm
core diameter	4.2 mm
head diameter	6.8 mm
drill bit for threaded hole	Ø 3.9 mm
screwdriver	Ø 3.5 mm



397 129 69 6392 Stand for locking screws 5
214 × 126 × 120 mm
excluding implants

Locking bone screw 5

SSt	A
397 129 77 7981	16 mm
397 129 77 7991	18 mm
397 129 77 8001	20 mm
397 129 77 8011	22 mm
397 129 77 8021	24 mm
397 129 77 8031	26 mm
397 129 77 8041	28 mm
397 129 77 8051	30 mm
397 129 77 8061	32 mm
397 129 77 8071	34 mm
397 129 77 8081	36 mm
397 129 77 8091	38 mm
397 129 77 8101	40 mm
397 129 77 8111	42 mm
397 129 77 8121	44 mm
397 129 77 8131	46 mm
397 129 77 8141	48 mm
397 129 77 8151	50 mm
397 129 77 8161	55 mm
397 129 77 8171	60 mm
397 129 77 8181	65 mm
397 129 77 8191	70 mm
397 129 77 8201	75 mm
397 129 78 7401	80 mm
397 129 78 7411	85 mm
397 129 78 7421	90 mm
397 129 78 7431	95 mm
397 129 78 7441	100 mm
397 129 78 7451	105 mm



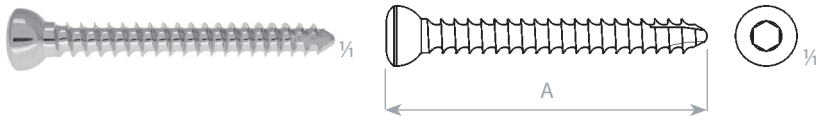
thread diameter	3.5 mm
core diameter	2.9 mm
head diameter	6.8 mm
drill bit for threaded hole	Ø 2.9 mm
screwdriver	Ø 3.5 mm



397 129 69 6390 Stand for locking screws 5/3.5
214 × 126 × 120 mm
excluding implants

Locking bone screw 5/3.5

SSt	A
397 129 77 8231	16 mm
397 129 77 8241	18 mm
397 129 77 8251	20 mm
397 129 77 8261	22 mm
397 129 77 8271	24 mm
397 129 77 8281	26 mm
397 129 77 8291	28 mm
397 129 77 8301	30 mm
397 129 77 8311	32 mm
397 129 77 8321	34 mm
397 129 77 8331	36 mm
397 129 77 8341	38 mm
397 129 77 8351	40 mm
397 129 77 8361	42 mm
397 129 77 8371	44 mm
397 129 77 8381	46 mm
397 129 77 8391	48 mm
397 129 77 8401	50 mm
397 129 77 8411	55 mm
397 129 77 8421	60 mm
397 129 77 8431	65 mm
397 129 77 8441	70 mm
397 129 77 8451	75 mm
397 129 78 7471	80 mm
397 129 78 7481	85 mm
397 129 78 7491	90 mm
397 129 78 7501	95 mm
397 129 78 7511	100 mm
397 129 78 7521	105 mm



thread diameter	4.5 mm
core diameter	3.0 mm
head diameter	8.0 mm
drill bit for threaded hole	Ø 2.9 mm
drill bit for gliding hole	Ø 4.5 mm
screwdriver	Ø 3.5 mm

Self-tapping cortical bone screw HA 4.5

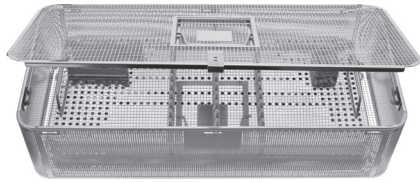
SSt	A
397 129 79 9421	14 mm
397 129 79 9431	16 mm
397 129 79 9441	18 mm
397 129 79 5521	20 mm
397 129 79 9451	22 mm
397 129 79 9461	24 mm
397 129 79 5541	26 mm
397 129 79 9471	28 mm
397 129 79 5551	30 mm
397 129 79 9481	32 mm
397 129 79 9491	34 mm
397 129 79 5571	36 mm
397 129 79 9501	38 mm
397 129 79 5581	40 mm
397 129 79 9511	42 mm
397 129 79 9521	44 mm
397 129 79 9531	46 mm
397 129 79 9541	48 mm
397 129 79 5601	50 mm
397 129 79 9551	52 mm
397 129 79 9561	54 mm
397 129 79 9571	56 mm
397 129 79 9581	58 mm
397 129 79 5621	60 mm
397 129 79 5631	65 mm
397 129 79 5641	70 mm
397 129 79 5651	75 mm
397 129 79 5661	80 mm
397 129 79 5671	85 mm
397 129 79 5681	90 mm
397 129 79 5691	95 mm
397 129 79 5701	100 mm
397 129 79 5711	105 mm
397 129 79 5721	110 mm



397 129 69 6391 Stand for cortical screws 4.5
214 × 126 × 120 mm
excluding implants

PERIPROSTHETIC FEMORAL FRACTURES

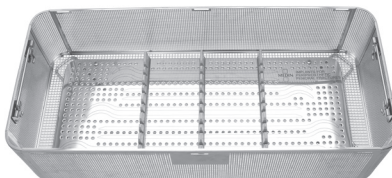
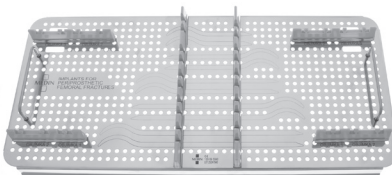
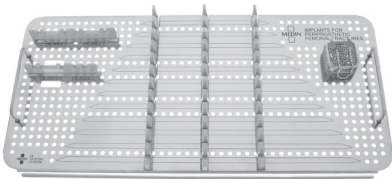
INSTRUMENTS FOR PERIPROSTHETIC FEMORAL FRACTURES

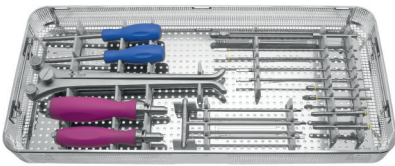


397 129 69 5040 Sieve for implants for periprosthetic femoral fractures
540 × 240 × 130 mm
excluding instruments

Sieve is for keeping of: straight plates 9–20 holes (10×1 piece), right femoral proximal plates 2–20 holes (10×1 piece), left femoral proximal plates 2–20 holes (10×1 piece), clamps 1 (3 pcs), clamps 2 (6 pcs), clamps 3 (3 pcs) and locking screws for clamp (10 pcs).

DETAIL OF PLACING IMPLANTS FOR PERIPROSTHETIC FEMORAL FRACTURES



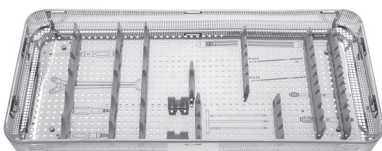


397 139 09 0355 Instrumentarium for periprosthetic femoral fractures
540 × 240 × 50 mm
including instruments



397 139 09 0350 set

		pcs
1	397 129 69 5141 Drill; 3.9×220 mm	2
2	397 129 79 9981 Drill; 2.9×190 mm	2
3	397 129 69 4300 Guide sleeve locking; 6.8/4.0×80 mm	2
4	397 129 69 4430 Guide sleeve 3.9/3×95 mm	2
5	397 129 69 8890 Depth gauge; 120 mm	1
6	BD23-110-AO Handle AO; 30×151 mm	1
7	BD28-120-AO-4,0 Handle AO; 4,0 Nm; 38×171 mm	1
8	397 129 69 5251 Screwdriver hexagonal; 3.5×160 mm	2
9	397 129 69 4050 Screwdriver T hexagonal; 3.5×175 mm	1
10	397 129 68 0290 Bending rod for clamps	2
11	397 129 08 4960 Plier for plates width 11x290 mm	1



397 129 69 5045 Sieve for instrumentarium for periprosthetic femoral fractures
540 × 240 × 50 mm
excluding instruments

REFID