



NÁHRADY KOLENNÍHO KLOUBU
KNEE REPLACEMENTS



NÁHRADY KOLENNÍHO KLOUBU

KNEE REPLACEMENTS



Vektor

Vektor

Nástroje

Kombinace velikostí

Vektor

Vektor

Instruments

Sizes combination

3-4

5

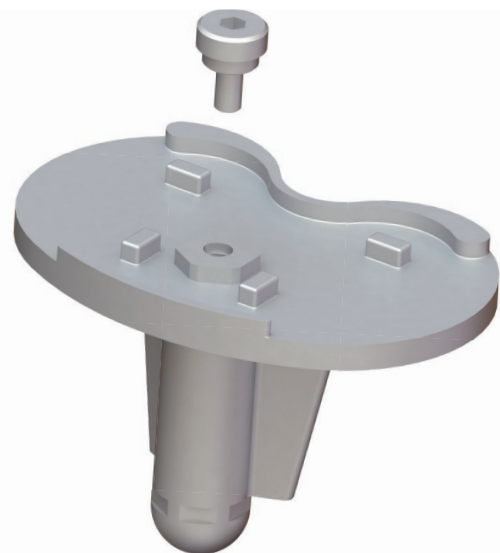
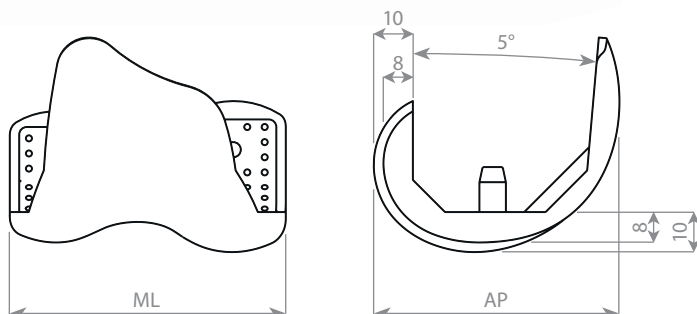
6



Femorální komponenta Vektor
Femoral component Vektor

- CoCrMo (ISO 5832-4)
- cementovaná/cemented

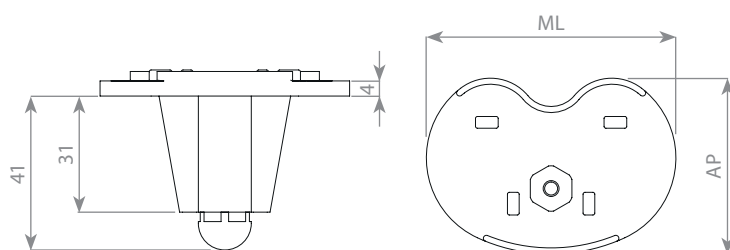
	velikost/size	AP	ML
Z01170-0100-60037	1R	55 mm	60 mm
Z01170-0200-62040	2R	58 mm	62 mm
Z01170-0300-65044	3R	62 mm	65 mm
Z01170-0300-70044	3+R	62 mm	70 mm
Z01170-0400-67046	4R	66 mm	67 mm
Z01170-0400-73046	4+R	66 mm	73 mm
Z01170-0500-76050	5R	70 mm	76 mm
Z01170-0600-80054	6R	75 mm	80 mm
Z01180-0100-60037	1L	55 mm	60 mm
Z01180-0200-62040	2L	58 mm	62 mm
Z01180-0300-65044	3L	62 mm	65 mm
Z01180-0300-70044	3+L	62 mm	70 mm
Z01180-0400-67046	4L	66 mm	67 mm
Z01180-0400-73046	4+L	66 mm	73 mm
Z01180-0500-76050	5L	70 mm	76 mm
Z01180-0600-80054	6L	75 mm	80 mm

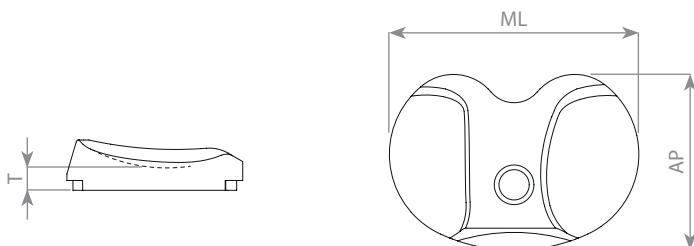
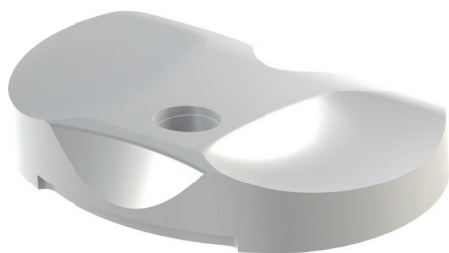


Tibiální plato Vektor
Tibial plateau Vektor

- Ti6Al4V (ISO 5832-3)
- cementovaná/cemented

	velikost/size	AP	ML
Z01240-0100-59040	1	40 mm	59 mm
Z01240-0100-61042	1+	42 mm	61 mm
Z01240-0200-61042	2	42 mm	61 mm
Z01240-0200-64044	2+	44 mm	64 mm
Z01240-0300-64044	3	44 mm	64 mm
Z01240-0300-69046	3+	46 mm	69 mm
Z01240-0400-66046	4	46 mm	66 mm
Z01240-0400-72048	4+	48 mm	72 mm
Z01240-0500-75051	5	51 mm	75 mm
Z01240-0500-79053	5+	53 mm	79 mm
Z01240-0600-79053	6	53 mm	79 mm





Tibiální vložka Vektor, pravá
Tibial insert Vektor, right

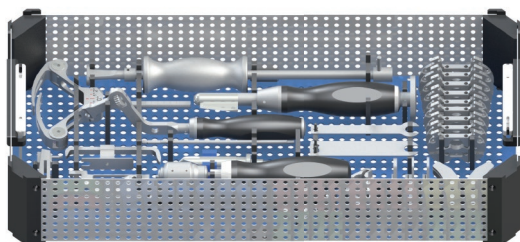
• UHMWPE (ISO 5834-2)

	velikost/size	AP	ML	T
Z01240-0132-59010	1/10 R	40 mm	59 mm	6 mm
Z01240-0132-59012	1/12 R	40 mm	59 mm	8 mm
Z01240-0132-59014	1/14 R	40 mm	59 mm	10 mm
Z01240-0132-59016	1/16 R	40 mm	59 mm	12 mm
Z01240-0232-61010	2/10 R	42 mm	61 mm	6 mm
Z01240-0232-61012	2/12 R	42 mm	61 mm	8 mm
Z01240-0232-61014	2/14 R	42 mm	61 mm	10 mm
Z01240-0232-61016	2/16 R	42 mm	61 mm	12 mm
Z01240-0332-64010	3/10 R	44 mm	64 mm	6 mm
Z01240-0332-64012	3/12 R	44 mm	64 mm	8 mm
Z01240-0332-64014	3/14 R	44 mm	64 mm	10 mm
Z01240-0332-64016	3/16 R	44 mm	64 mm	12 mm
Z01240-0332-69010	3+/10 R	46 mm	69 mm	6 mm
Z01240-0332-69012	3+/12 R	46 mm	69 mm	8 mm
Z01240-0332-69014	3+/14 R	46 mm	69 mm	10 mm
Z01240-0332-69016	3+/16 R	46 mm	69 mm	12 mm
Z01240-0432-66010	4/10 R	46 mm	66 mm	6 mm
Z01240-0432-66012	4/12 R	46 mm	66 mm	8 mm
Z01240-0432-66014	4/14 R	46 mm	66 mm	10 mm
Z01240-0432-66016	4/16 R	46 mm	66 mm	12 mm
Z01240-0432-72010	4+/10 R	48 mm	72 mm	6 mm
Z01240-0432-72012	4+/12 R	48 mm	72 mm	8 mm
Z01240-0432-72014	4+/14 R	48 mm	72 mm	10 mm
Z01240-0432-72016	4+/16 R	48 mm	72 mm	12 mm
Z01240-0532-75010	5/10 R	51 mm	75 mm	6 mm
Z01240-0532-75012	5/12 R	51 mm	75 mm	8 mm
Z01240-0532-75014	5/14 R	51 mm	75 mm	10 mm
Z01240-0532-75016	5/16 R	51 mm	75 mm	12 mm
Z01240-0632-79010	6/10 R	53 mm	79 mm	6 mm
Z01240-0632-79012	6/12 R	53 mm	79 mm	8 mm
Z01240-0632-79014	6/14 R	53 mm	79 mm	10 mm
Z01240-0632-79016	6/16 R	53 mm	79 mm	12 mm

Tibiální vložka Vektor, levá
Tibial insert Vektor, left

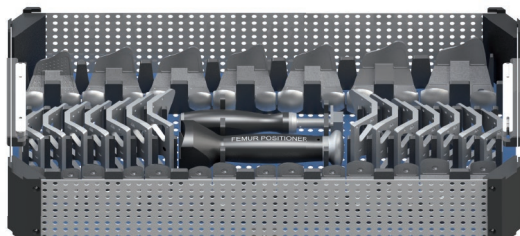
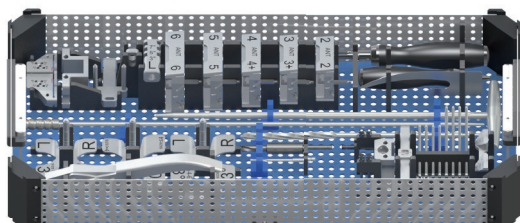
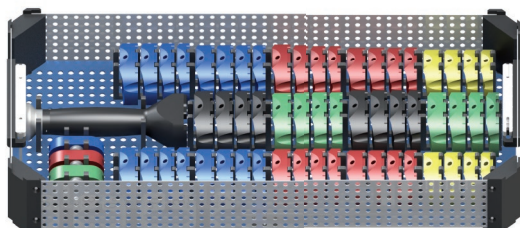
• UHMWPE (ISO 5834-2)

	velikost/size	AP	ML	T
Z01240-0133-59010	1/10 L	40 mm	59 mm	6 mm
Z01240-0133-59012	1/12 L	40 mm	59 mm	8 mm
Z01240-0133-59014	1/14 L	40 mm	59 mm	10 mm
Z01240-0133-59016	1/16 L	40 mm	59 mm	12 mm
Z01240-0233-61010	2/10 L	42 mm	61 mm	6 mm
Z01240-0233-61012	2/12 L	42 mm	61 mm	8 mm
Z01240-0233-61014	2/14 L	42 mm	61 mm	10 mm
Z01240-0233-61016	2/16 L	42 mm	61 mm	12 mm
Z01240-0333-64010	3/10 L	44 mm	64 mm	6 mm
Z01240-0333-64012	3/12 L	44 mm	64 mm	8 mm
Z01240-0333-64014	3/14 L	44 mm	64 mm	10 mm
Z01240-0333-64016	3/16 L	44 mm	64 mm	12 mm
Z01240-0333-69010	3+/10 L	46 mm	69 mm	6 mm
Z01240-0333-69012	3+/12 L	46 mm	69 mm	8 mm
Z01240-0333-69014	3+/14 L	46 mm	69 mm	10 mm
Z01240-0333-69016	3+/16 L	46 mm	69 mm	12 mm
Z01240-0433-66010	4/10 L	46 mm	66 mm	6 mm
Z01240-0433-66012	4/12 L	46 mm	66 mm	8 mm
Z01240-0433-66014	4/14 L	46 mm	66 mm	10 mm
Z01240-0433-66016	4/16 L	46 mm	66 mm	12 mm
Z01240-0433-72010	4+/10 L	48 mm	72 mm	6 mm
Z01240-0433-72012	4+/12 L	48 mm	72 mm	8 mm
Z01240-0433-72014	4+/14 L	48 mm	72 mm	10 mm
Z01240-0433-72016	4+/16 L	48 mm	72 mm	12 mm
Z01240-0533-75010	5/10 L	51 mm	75 mm	6 mm
Z01240-0533-75012	5/12 L	51 mm	75 mm	8 mm
Z01240-0533-75014	5/14 L	51 mm	75 mm	10 mm
Z01240-0533-75016	5/16 L	51 mm	75 mm	12 mm
Z01240-0633-79010	6/10 L	53 mm	79 mm	6 mm
Z01240-0633-79012	6/12 L	53 mm	79 mm	8 mm
Z01240-0633-79014	6/14 L	53 mm	79 mm	10 mm
Z01240-0633-79016	6/16 L	53 mm	79 mm	12 mm



Instrumentárium pro náhradu kolenního kloubu Vektor
Instrument set for Vektor knee replacement

Z71080-0000



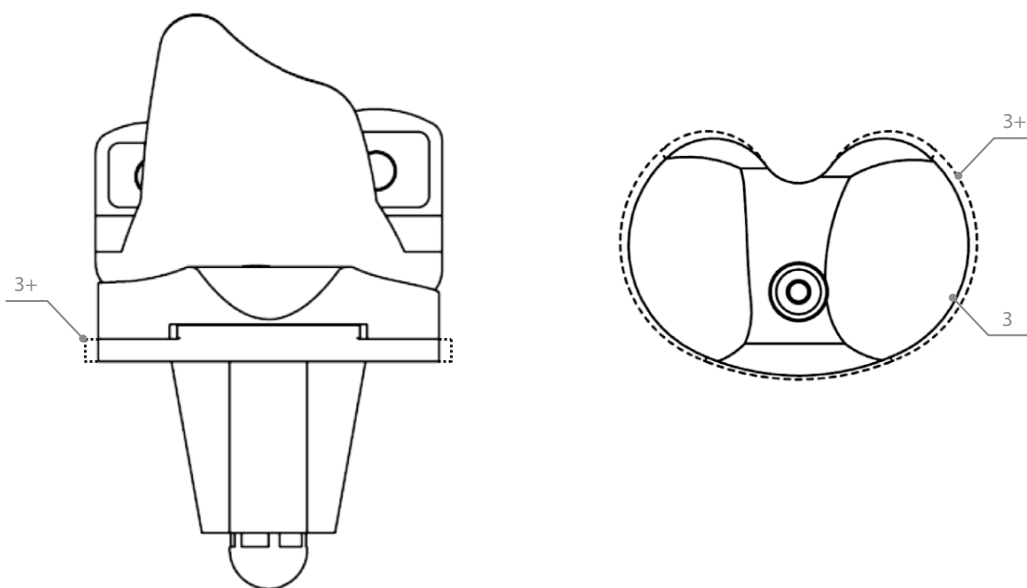
KOMBINACE VELIKOSTÍ
SIZES COMBINATION

Kombinace velikostí kolenní náhrady Vektor
Sizes combination of Vektor knee replacement

Pozn.: Velikost tibiální vložky odpovídá femorální komponentě.
Note: The size of the tibial insert corresponds to the femoral component.

		FEMORÁLNÍ KOMPONENTA FEMORAL COMPONENT								
		1	2	3	3+	4	4+	5	6	
TIBIÁLNÍ PLATO TIBIAL PLATEAU	1	●								
	1+	●								
	2		●							
	2+		●							
	3			●						
	3+			●	●					
	4					●				
	4+					●	●			
	5							●		
	5+							●		
	6									●

Příklad – velikost 3:
Example – size 3:



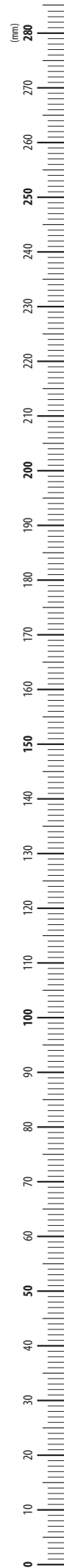


POUŽITÉ ZKRATKY A SYMBOLY

SSt	provedení SSt – materiál: nerezová ocel, dle ISO 5832-1
Ti	provedení TITAN – materiál: Ti6Al4V ELI, dle ISO 5832-3
∅	průměr
⬡	šestihran
◐	půlměsíček
△	tříhran

USED ABBREVIATIONS AND SYMBOLS

SSt	SSt version – material: stainless steel, in accordance with ISO 5832-1
Ti	TITANIUM version – material: Ti6Al4V ELI, in accordance with ISO 5832-3
∅	diameter
⬡	hexagon
◐	half-circle
△	triangular





MEDIN, a.s.
Vlachovická 619
Nové Město na Moravě
CZ 592 31
Czech Republic
IČO 43378030
DIČ CZ43378030

PRODEJ ČESKÁ REPUBLIKA

tel.: 566 684 327
fax: 566 684 384
e-mail: prodej@medin.cz

EXPORT

phone: +420 566 684 331
fax: +420 566 684 385
e-mail: export@medin.cz

www.medin.cz
www.medin.eu



Výroba a vývoj

ProSpon spol. s r.o.
Jiřího Voskovce 3206
272 01 Kladno

PRODEJ ČESKÁ REPUBLIKA

tel: +420 312 247 763
e-mail: ortho@medin.cz

www.prospon.cz