



Unique instrument for the root canal processing

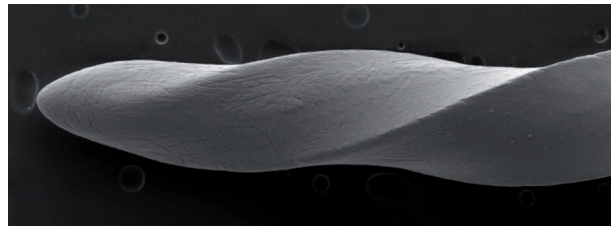


A sophisticated construction and processing of the used material enables to reach highly professional results in the processing of the root canals when using the Unicone instruments. The unique characteristics are enhanced by reciprocating motion.

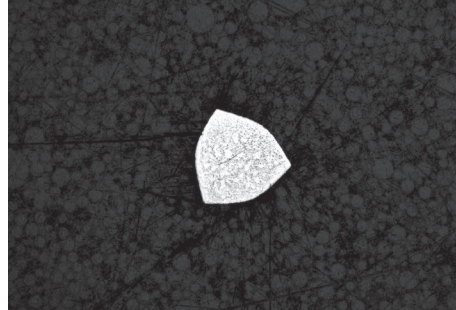
A flexibility and lifetime of the Unicone instrument is increased by the use of the specifically heat-treated NiTi alloy.



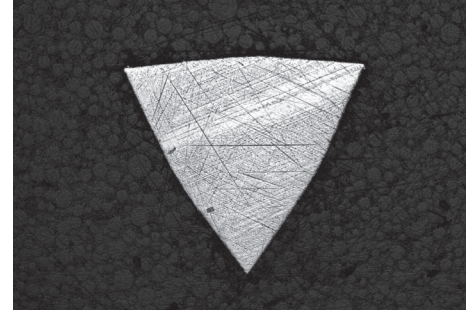
High-precision of the instrument grinding



The inactive tip eliminates the risk of perforation of the root canal.



The instrument profile 3 mm from the tip



The instrument profile 6 mm from the tip

Design of the Unicone instruments

Design of each instrument is specifically created for more effective preparation of the root canal. Different helix pitch provides a greater flexibility of the instruments and improved debris removal at the preparation.

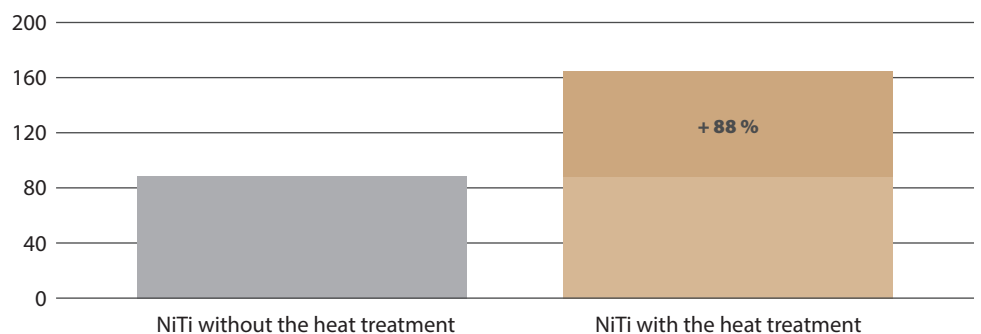


The Unicone 6/025 is a key instrument. The instrument 6/020 is intended for the narrow canals and the 6/040 for wider ones.

Heat treatment of the MEDIN NiTi material

MEDIN company developed a novel technology of the controlled heat treatment processing, which provides enhanced resistance to the cyclic fatigue. The whole process of the heat affecting of the NiTi material provides increased flexibility and improved surface finish of the instrument.

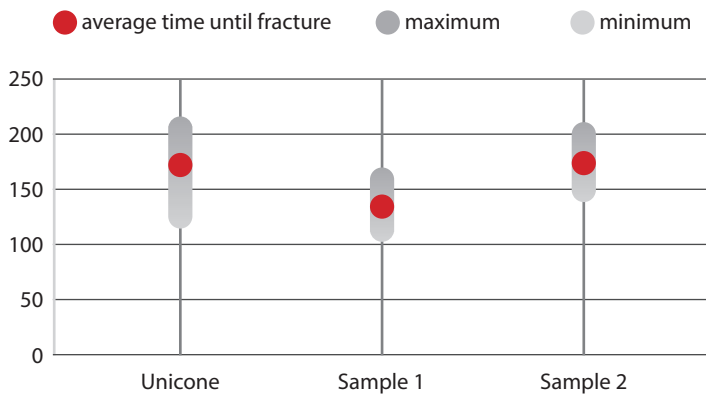
Lifespan of NiTi Instruments



Comparison of the Unicone instrument with the other reciprocal instruments available on the market

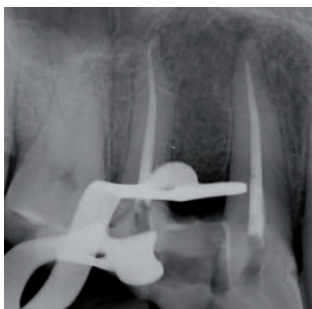
NiTi rotary endodontic instruments are currently very popular in endodontic practice. NiTi alloy has exceptional characteristics such as shape memory and great flexibility. Authors of this study examined whether technique of processing NiTi alloy has an effect on the longer lifespan of the instrument.

The results show the high quality of the Unicone instrument. The Unicone has the longest time till the fracture for group of the reciprocal instruments with the heat treatment. The Unicone system is therefore the winner in this category of instruments.



Literature:
 HARVAN Ľuboš, KONEČNÁ Petra, VOBORNÁ Iva,
 ŽIŽKA Radovan. In Vitro Comparison of Cyclic Fatigue
 Resistance of Different Rotary System. Czech Dental
 Chamber's Journal LKS. 2016, 26(5), 110-114.

Clinical examples of the work with the Unicone instruments



Michał Ganowicz DDS PhD (Warsaw, Poland)



Pavel Hyšpler, MD (Prague, Czech Republic)



Recommended use of the instruments for preparation

glide path			coronal flaring	shaping & finishing		
W-File 006	W-File 008	W-File 010	Navigator W-XN 025	common canals	narrow canals	wide canals
				Unicone 6/025	Unicone 6/020	Unicone 6/040

System for root canals preparation with reciprocal movement

Made from high flexible Nickel-Titanium with extended lifetime thanks to a special technology treatment.

- > Effectiveness
- > Flexibility
- > Originality
- > Sterilizable



	packing 6 pcs	taper ratio			
		6%	6%	6%	
		ISO	020	025	040
L = 21	144 50	1305	1315	1325	
L = 25	144 50	1275	1285	1295	
L = 31	144 50	1875	1885	1895	

Set Unicone I

Unicone Set of 3

L = 21	144 45 1125
L = 25	144 45 1025
L = 31	144 45 1155

Sets contain 3 instruments



Set Unicone II

Unicone Set of 6

L = 21	144 45 1135
L = 25	144 45 1035
L = 31	144 45 1165

Sets contain 6 instruments



Set Unicone III

MEDIN Endo Set

L = 21	144 45 1145
L = 25	144 45 1045
L = 31	144 45 1175

Sets contain 6 instruments



Start Kit Unicone

144 45 1055

144 45 1025	Set Unicone I	1x
144 91 1037	Set Gutta Percha Points 6/015-040	1x
144 91 1072	Set Absorbent Paper Points 6/015-040	1x
	Product Brochure Unicone	1x
	Instructions for use	1x



ENDO a CLASS Reciprocating LED



sophisticated cordless endodontic micromotor

Navigator EVO



rotary NiTi system for root canal treatment

Your distributor: